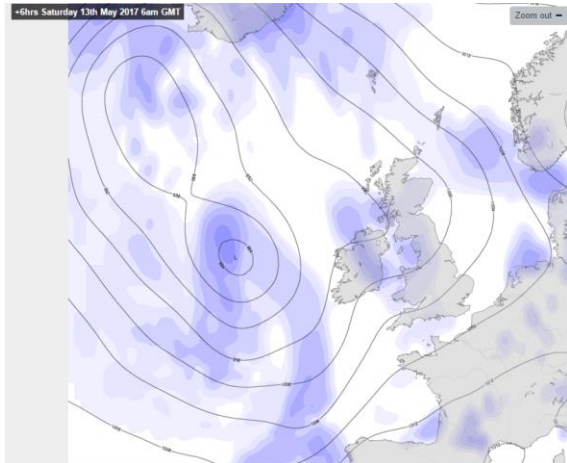


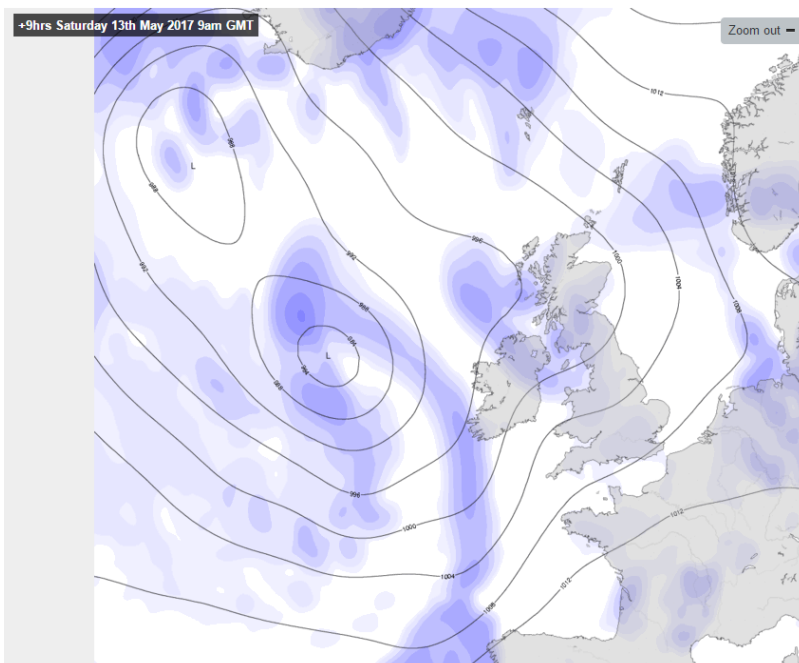
Tracking a Rain Event with the Climate Sensor

We want to observe how weather data relates to an upcoming rain event. Here are the weather maps which show the approaching front:

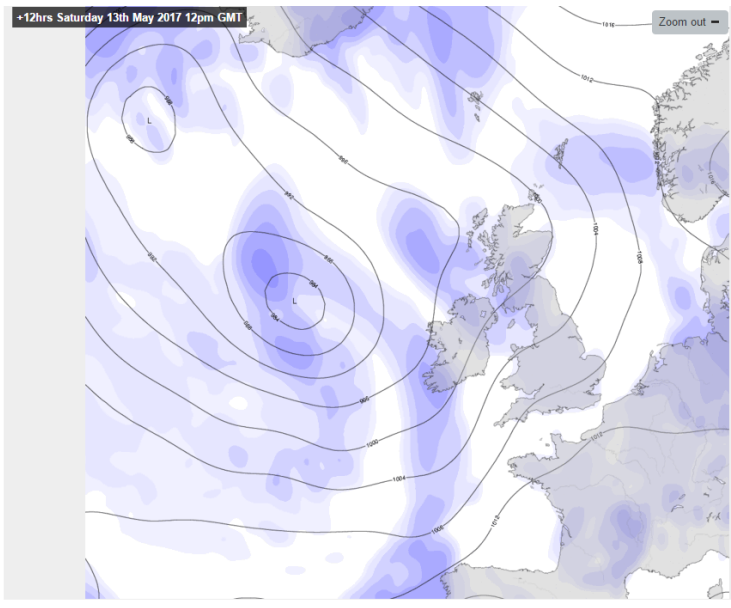
6AM



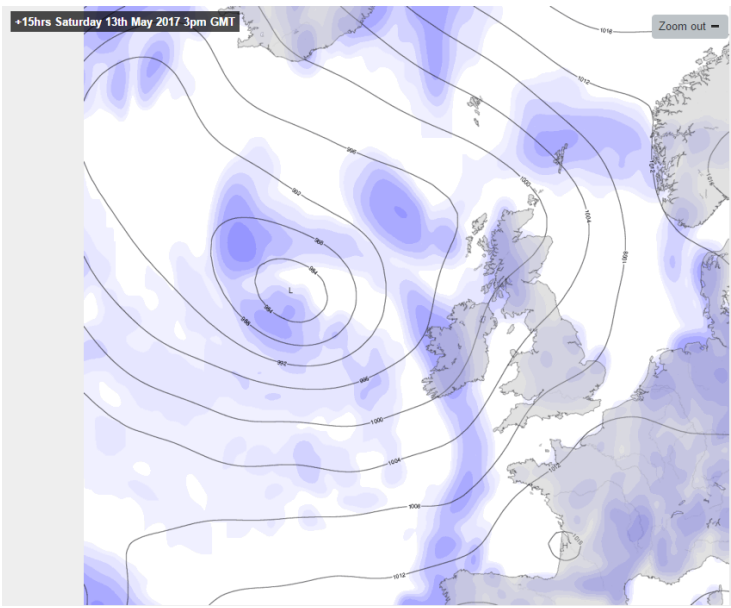
9AM



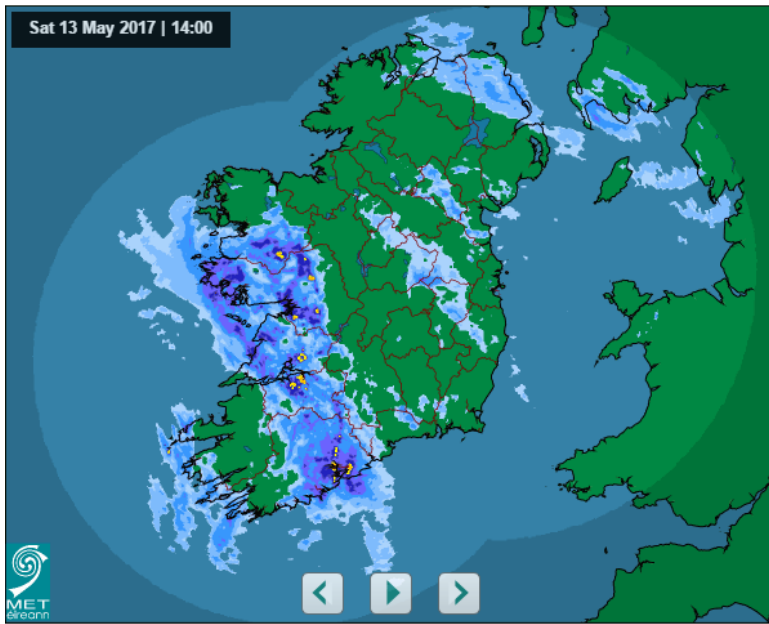
12PM:



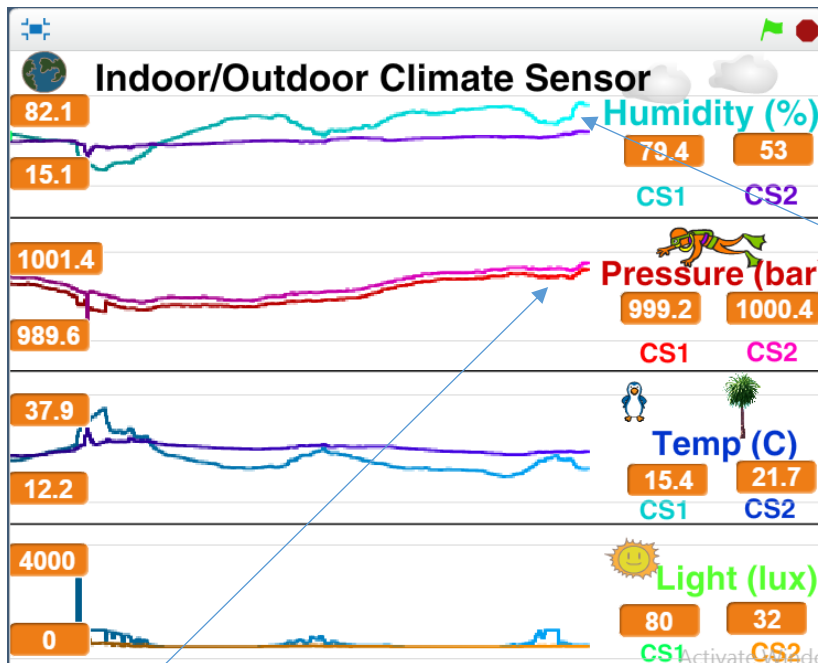
3PM:



Radar Map at 2PM:



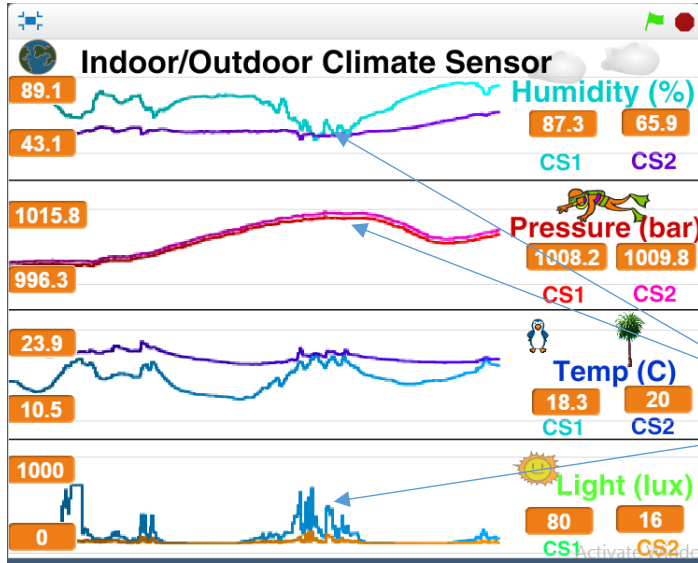
Climate Sensor Data at the time of the passing rain front:



Rapid increase in humidity

Rapid Change in Pressure

The Weather Data Showing The Clearing Trend After the Rain Front:



Low Humidity
High Pressure
Large amount of Sunshine